

70 Beechwood  
Gardens  
Slough  
SL1 2HR





## 70 Beechwood Gardens

**£319,950**

BEECHWOOD GARDENS, SLOUGH SL1 2HR.  
Located on this quiet cul-de-sac in the heart of the town centre and within 5 mins walk to BR station.

This TWO bedroom first floor FLAT. Briefly comprises Hallway, two double bedrooms (Bedroom 2 with BALCONY), Luxurious family Bathroom, open plan Kitchen/lounge. BALCONY, German made laminate flooring.

Call now to arrange a viewing.

Local Authority  
Slough

Council Tax Band  
C

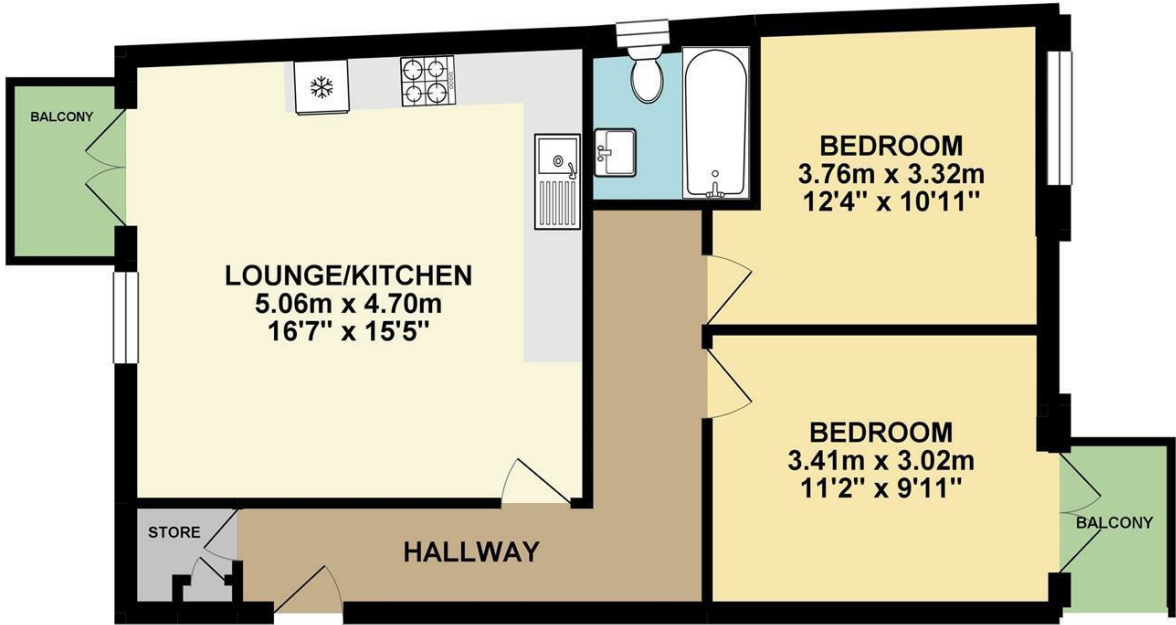
Directions

Energy Efficiency Rating		
	Current	Potential
Very energy efficient - lower running costs		
(92 plus) A		
(81-91) B	81	81
(69-80) C		
(55-68) D		
(39-54) E		
(21-38) F		
(1-20) G		
Not energy efficient - higher running costs		
England & Wales	EU Directive 2002/91/EC	



**Agents Note:** Whilst every care has been taken to prepare these particulars, they are for guidance purposes only. All measurements are approximate and are for general guidance purposes only and whilst every care has been taken to ensure their accuracy, they should not be relied upon and potential buyers/tenants are advised to recheck the measurements

FIRST FLOOR 64.47 sq. m.  
( 693.97 sq. ft. )



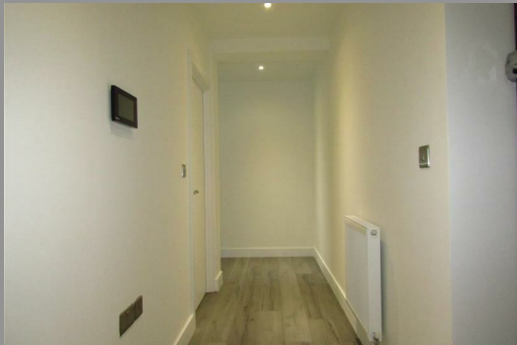
TOTAL FLOOR AREA : 64.47 sq. m. ( 693.97 sq. ft. ) approx.

Whilst every attempt has been made to ensure the accuracy of the floorplan contained here, measurements of doors, windows, rooms and any other items are approximate and no responsibility is taken for any error, omission or mis-statement. This plan is for illustrative purposes only and should be used as such by any prospective purchaser. The services, systems and appliances shown have not been tested and no guarantee as to their operability or efficiency can be given.  
Made with Metropix ©2019



## Ealing Lettings

38 St Mary's Road  
Ealing  
W5 5EU



## Contact

020 8567 2648

[ealing@huntmorehomes.com](mailto:ealing@huntmorehomes.com)

[huntmorehomes.com](http://huntmorehomes.com)

HUNTMORE  
— HOMES —